

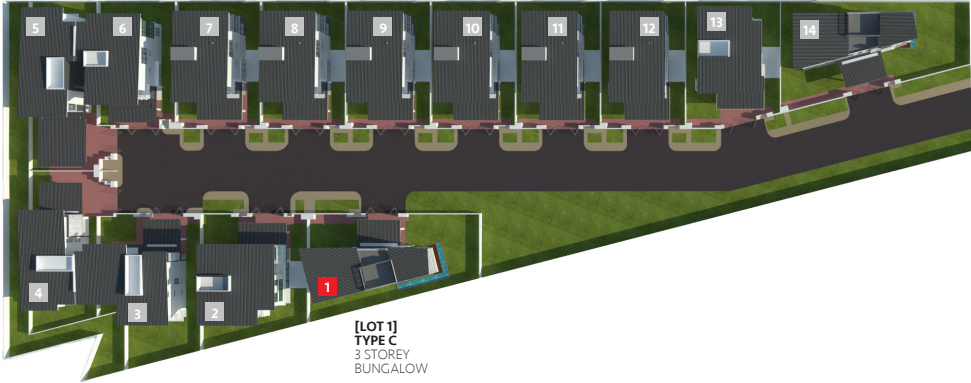
BUNGALOW  
TYPE C - (LOT 1)  
3 - Storey

Approximate Land Area:  
5,220 sq ft (101' x 51')

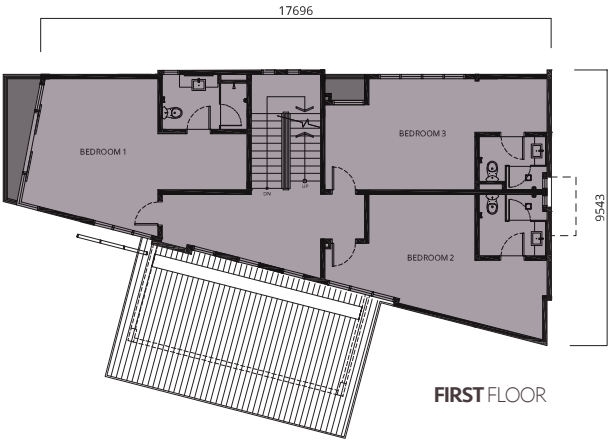
Approximate Built-up:  
4,608 sq ft

LEGEND

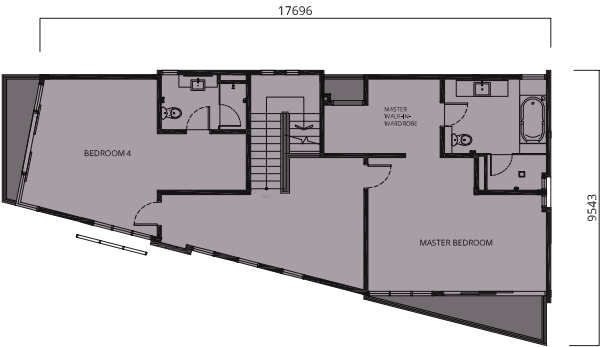
- Grass
- Pond
- Interior
- Exterior



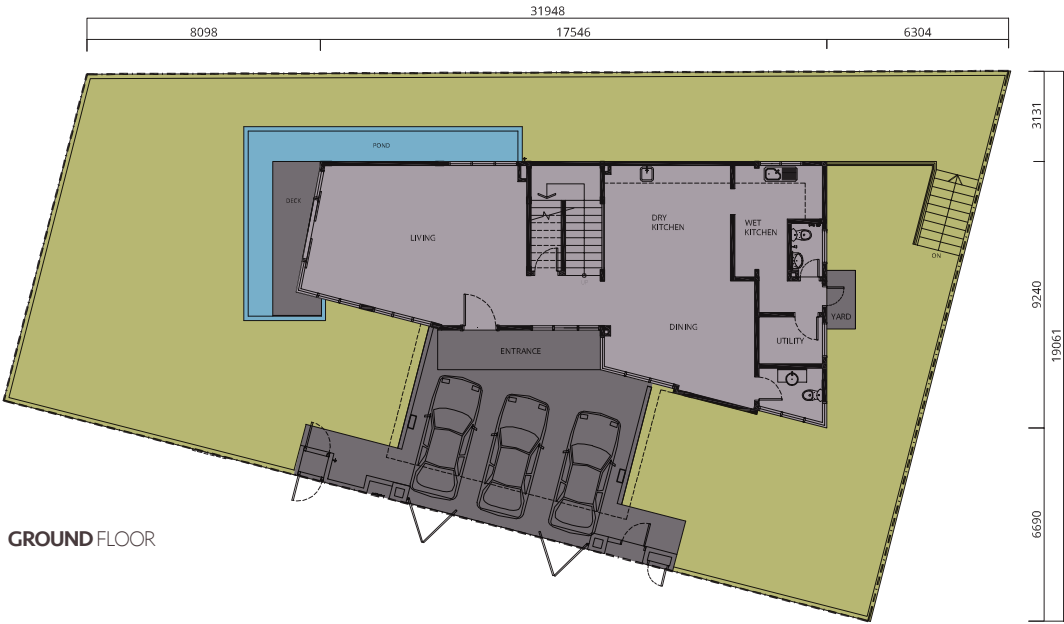
[LOT 1]  
TYPE C  
3 STOREY  
BUNGALOW



FIRST FLOOR



SECOND FLOOR



GROUND FLOOR



**MINESVILLA**  
TAMAN SUNGAI BESI INDAH

**BUNGALOW  
TYPE C - (LOT 1)**  
3 - Storey

Approximate Land Area:  
**5,220 sq ft (101' x 51')**

Approximate Built-up: **4,608 sq ft**

5+1 Bedrooms | 6 Bathrooms |  
Powder Room | Large Garden  
With Pond Area | 3 Carpark Bays

A subsidiary of  
**V DEVELOPMENT  
SDN BHD** (1071500-A)

www.vdevelopment.com.my

+6017 301 8038 | +6011 2683 1733

<b>STRUCTURE</b>	Reinforced concrete	
<b>WALL</b>	Clay brick / Lightweight concrete block	
<b>ROOFING COVERING</b>	Metal deck roof / Reinforced concrete flat roof (water tank)	
<b>ROOF STRUCTURE</b>	Steel roofing framing	
<b>CEILING</b>	Plaster ceiling / Skim coat	
<b>WINDOWS</b>	Powder coated aluminum frame window	
<b>DOORS</b> Main Entrance Others	Solid core timber door Solid core chipboard flush door / Solid core chipboard flush door with waterproofing panel / Flush door with timber louvers panel / Powder coated aluminum frame door	
<b>IRONMONGERIES</b>	Quality lockset	
<b>WALL FINISHES</b> Bathroom Kitchen Others	Porcelain tiles up to ceiling height Ceramic tiles up to ceiling height Plaster and paint	
<b>FLOOR FINISHES</b> Ground Floor, Bathroom First & Second Floor, Stairs Car Porch Others	Porcelain tiles Laminated flooring Concrete imprint Cement render	
<b>SANITARY &amp; PLUMBING FITTINGS</b>	Kitchen Sink	2
	Water Closet	7
	Wash Basin	7
	Bath Tub	1
	Shower Head	6
	Sink Tap	2
	Basin Tap	7
	Bip Tap	1
	Hand Bidet	7
<b>ELECTRICAL INSTALLATION</b>	Lighting Point	64
	Gate Light Point	2
	Ceiling Fan Point	9
	Power Socket Point	45
	Washing Machine Point	1
	Air Conditioning Point	8
	Water Heater Point	5
	Cooker Hood Point	1
	Oven Point	1
	Door Bell Point	1
	Autogate Point	1
	CCTV Point	2
	Tel Point	3
	TV Point	2
	Data Point	2
<b>ELECTRICAL SUPPLY</b>	63A 3-phase 415V distribution board	
<b>SECURITY SYSTEM</b>	Standalone	
<b>GATE</b>	Painted mild steel folding gates / Painted mild steel side gate	
<b>FENCING</b>	1500mm high brick wall fence	
<b>TURFING</b>	Within compound	

**DISCLAIMER:** All information, specifications, renderings, visual representations and plans are subject to amendments, variations and modifications without notifications as may required by the relevant authorities, consultants or the developer and is not intended to form part of an offer or contract.